



2018-2019 School Year

RCSD SRO INTERACTION FORM ARREST ANALYSIS

Dr. Jessica Herbert

IDEA Analytics



TABLE OF CONTENTS

RCSD SRO INTERACTION FORM – ARRESTS	2
RCSD SRO INTERACTION FORM – ARREST PROCESS CHART	4
OVERVIEW OF ARRESTS FOR 2018-2019 SCHOOL YEAR.....	5
INITIATING INCIDENTS OF ARRESTS.....	6
CHARGES PER INCIDENT OF ARREST.....	7
ARRESTS BY AGE, GENDER AND RACE.....	8
<i>Arrests by Age</i>	9
<i>Arrests by Gender</i>	9
<i>Arrests by Race</i>	11
APPENDIX A – SOUTH CAROLINA DEPARTMENT OF EDUCATION STUDENT POPULATION.....	13

This project was supported by Contract No. awarded to IDEA Analytics, LLC by the Bureau of Justice Assistance, U.S. Department of Justice. Data and information within this report is developed from the Richland County Sheriff's Department SRO Division Interaction Form database and the South Carolina Department of Education publicly available school population data.

RCSD SRO INTERACTION FORM – ARRESTS

In August 2017, the Richland County Sheriff's Department (RCSD) implemented a digital SRO Interaction Form to capture the activities of School Resource Officers (SROs) among their roles as Counselor, Educator and Law Enforcement Officer for school safety. This form is used to understand the activities of SROs to inform training, policy and school security measures.

The 2017-2018 Interaction Form included 109 questions or reporting areas regarding information on the SRO, the school, student demographics, the role of the SRO in the interaction, the context of interaction (e.g., topic of meeting), risk factors (e.g., behavioral issues, self-harm), protective factors (e.g., parental support, scholastic achievements), and outcomes (e.g., referrals to services, arrests). The role of the SRO is defined by the Triad Model, the school-based policing model established by National Association of School Based Resource Officers (NASRO) and adopted by the RCSD SRO program.

One role defined by this model and RCSD SRO program is the Law Enforcement Role, which includes the activity of arrests. Per RCSD policy, all SROs are required to complete an official arrest report when an arrest—juvenile or adult—is affected during the course of official duty and investigations on school grounds. Due to unique circumstances of juvenile arrests and delays in RCSD data entry for official arrest records, the RCSD SRO leadership requested the inclusion of general arrest reporting within the SRO Interaction Report for student arrests. ***The inclusion of this information within SRO Interaction Reports is to assist the SRO Program in measuring activities performed by SROs, not solely in analyzing arrests incidents.***¹ Furthermore, to protect the juvenile's identity, only non-personally identifying information was requested to denote an arrest occurred within the school environment (see RCSD SRO Interaction Form – Arrest Process Chart next page).

To ensure the accuracy of these reports, and timeliness of reporting, the RCSD SRO Leadership included a monthly review process for all arrests. Reports of the occurrence of arrests within the schools are a priority for RCSD. To ensure these events were for necessary criminal activities and not minor offenses, events reported within the Interaction Form were verified against official arrest records.² This quality assurance process supported three key priorities for the department: 1) Ensured timely and accurate reporting of youth arrests for SROs, 2) Ensuring timely evaluation of arrests by SRO leadership, and 3) Confirming arrests for the Office for Civil Rights monitors. If any information was missing, in error, or otherwise needed a correction based on the facts from the official RCSD Arrest Report, the RCSD SRO leadership worked with the officer to make appropriate changes in the Interaction Form and/or worked with IDEA Analytics to address changes to the data base.³

Reporting Errors and Data Quality. RCSD SRO Interactions Reporting for Arrests this school year encountered issues of timeliness and accuracy. Each month, a summary record of these incidents was

¹ Please refer to RCSD arrest reports for full analysis and/or arrest incident information.

² The RCSD SRO program does not have an analyst dedicated to support the data analysis of arrests. Although arrest records were available for the agency to review, there were no established processes or meetings for the review of these arrests for the SRO program.

³ SROs were not allowed to change existing entries. A separate quality assurance log was maintained between the researcher and the SRO leadership to track changes and provide justifications for the change. Minor adjustments (e.g., case number errors) were done by the researcher directly within Qualtrics. For major adjustments (e.g., non-reported arrests, multiple errors in reported arrest), the RCSD SRO leadership instructed the officer to complete a new Interaction Form with corrected information and/or to replace a prior report.

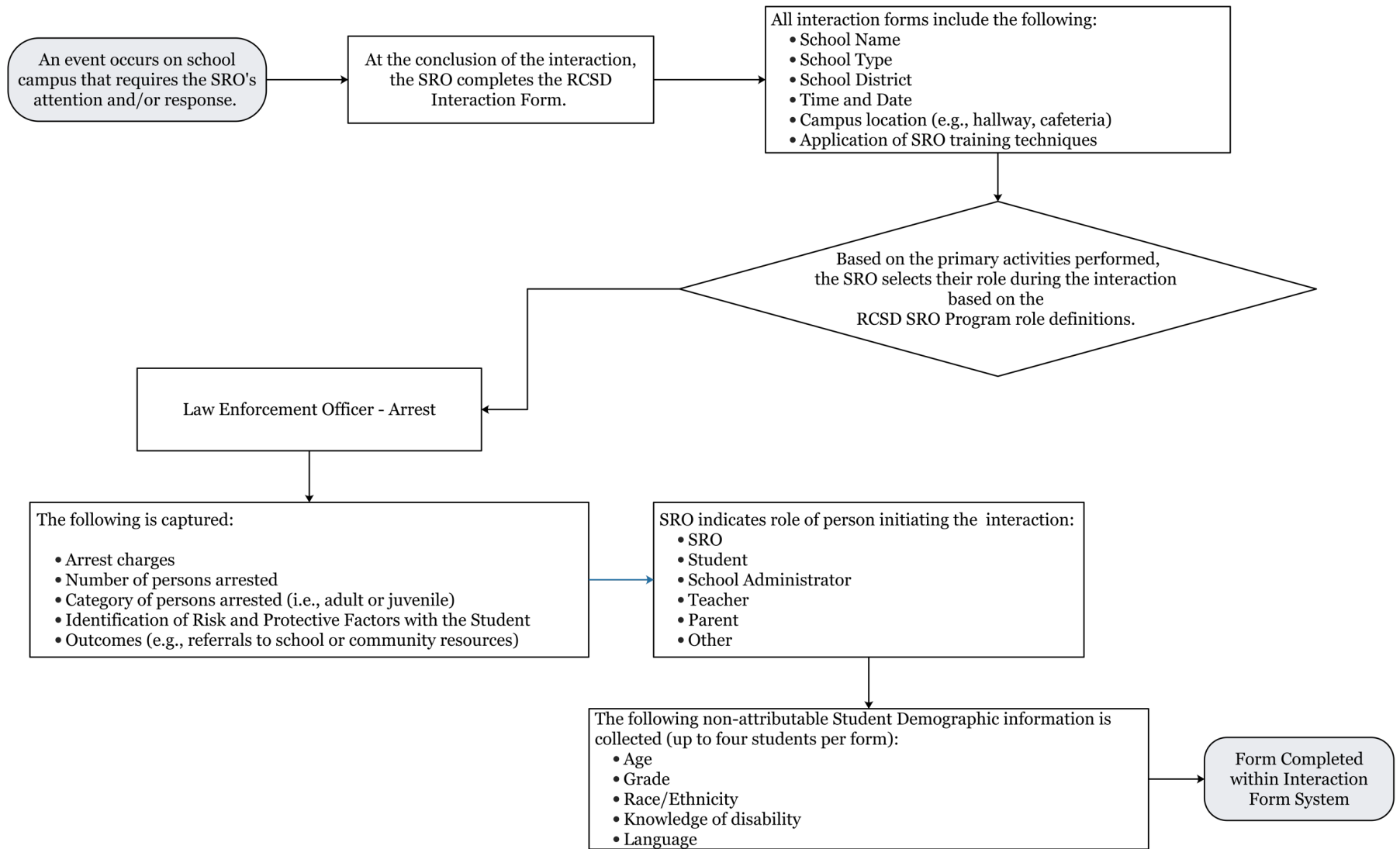
sent to SRO leadership to confirm the arrest occurred. This confirmation is provided SRO leadership based on official RCSD Arrest Reports. Adjustments to any data errors were addressed during these audits and any missing entries were corrected.

For the reporting period, there were eight (n=8) incidents reported in the Interaction Form that could not be confirmed with RCSD Arrest Reports. Requests were made to SRO leadership to clarify if these arrest interactions based on the reported case number and/or if the individual involved in the incident was notified of any changes to pending cases. Due to no Arrest Report being located for these incidents, they were removed from this analysis.

In addition to these unconfirmed arrests, approximately 70 incidents of arrests had not been entered in a timely manner between January and June 2019. Based on RCSD Arrest Records, RCSD SRO Leadership contacted these officers and directed them to enter these incidents into the Interaction Form. These reports were entered into the interaction form in July 2019.

Although efforts by RCSD SRO leadership was made to correct these reporting errors and/or the quality of information within the reports, there are data quality issues that remain. These errors are addressed in the sections below as applicable. In addition, secondary validation of arrest reports and/or the occurrence of arrests were not performed by this expert, but relied upon by the RCSD leadership acknowledgement. *Analysis within this report should not be taken as official arrest records due to the limited information available regarding charges and specific individual information. Please consult official RCSD arrest records for additional incident details.*

RCSD SRO INTERACTION FORM – ARREST PROCESS CHART



OVERVIEW OF ARRESTS FOR 2018-2019 SCHOOL YEAR

For the 2018-2019 school year, SROs reported a total of 232 arrest incidents. Eight (8) incidents were removed from this analysis due to leadership stating the arrest did not occur and/or the arrest report could not be located.⁴ Richland SRO Division confirmed **224 arrest incidents occurring within 24 schools for the school districts** (see Figure 1).

These arrests incidents included persons between the age of 8 and 19 years of age, among elementary, middle and high school students (i.e., Grades 6 thru 12).⁵

The SRO Interaction Form requests for the SRO to indicate the total number of the individuals arrested during an interaction. Based on this field, SROs reported 304 arrested persons; however, **demographic analysis of the incident indicates a total of 343 persons arrested**.⁶

A majority of arrest incidents involve a single arrest (80%). The remaining incidents involve two or more students (see Figure 2). Both Richland 01 and Richland 02 reported incidents involving a large number of juveniles. For instance, a fight among nine females occurred in Westwood High occurred in February 2019 resulting in assault charges for all individuals involved. Other multiple person-involved incidents occurred at Richland Northeast High, Columbia High, Lower Richland High, Summit Parkway Middle and Blythewood Academy.

Figure 1. Confirmed Arrest Incidents by District and School Name, 2018-2019

	School Name	Total Arrest Incidents
RCSD 01	Lower Richland High	34
	Columbia High	16
	Hopkins Middle	16
	A.C. Flora High	12
	Keenan High	12
	Olympia Learning Center	8
	Hopkins Elementary	4
	Crayton Middle	3
	Heyward Career and Technology Center	2
	Southeast Middle	2
	St. Andrews Middle	1
RCSD 02	Richland Northeast High	28
	Westwood High	21
	Ridge View High	16
	Blythewood Academy	14
	Dent Middle	10
	Spring Valley High	7
	E.L. Wright Middle	6
	Summit Parkway Middle	4
	Blythewood High	2
	Kelly Mill Middle	2
LexRich 05	Dutch Fork High	2
	Academy for Success	1
	Dutch Fork Middle	1

⁴ SROs entered a total of 232 Arrest Incidents within the required SRO Interaction Form. This form requests for them to quantify the number of persons arrested (n=316). The number of persons arrested were different from the number of juveniles listed on the form. Unconfirmed arrests (n=8) were denoted by RCSD SRO Leadership as not being able to confirm/locate an official RCSD Arrest Report although the SRO reported an arrest and case number for the arrest incident.

⁵ Grade level is identified by SRO entry per individual arrested. There are instances where the grade of the individual conflicts with grade levels of the school. For example, There are four (4) arrests reported at Hopkins Elementary, which hosts grades Pre-K through Grade 5. While the arrests are reported as occurring at this school, the grade levels for the individuals arrested are indicated as Grade 7 and Grade 8. This may be due to students from another school being arrested at this location.

⁶ One arrest incident does not report number of persons arrested nor demographic information of arrests to infer data. Unconfirmed arrests (n=8) not included.

Figure 2. Confirmed SRO Arrest Incidents, 2018-2019 School Year

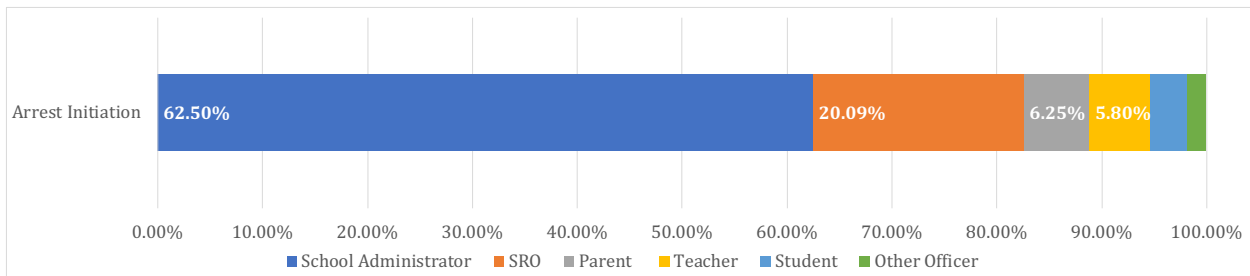
School District	Incidents involving one arrest	Incidents involving two arrests	Incidents involving three arrests	Incidents involving 4+ arrests	Total Arrest Incidents
RCSD 01	94	9	4	3	110
RCSD 02*	87	11	2	9	109
LexRich 05	4	0	0	0	4

*One Incident for RCSD 02 did not report the number of persons arrested.

INITIATING INCIDENTS OF ARRESTS

RCSD SROs were asked to report how these incidents were initiated to understand how school personnel were involved in SRO activities and/or policy processes. For the 224 confirmed incidents involving arrests, SROs reported School Administrators being the primary initiator of arrest incidents (n=140) followed by their own actions (n=45). The remaining arrest interactions were initiated by other school representatives, parents or law enforcement officers.

Figure 3. Initiation of SRO Arrest Incidents, 2018-2019



CHARGES PER INCIDENT OF ARREST

Arrest incidents primarily involve drugs, specifically Narcotics Violation - Schedule I marijuana.⁷ These arrests occur most frequently at high schools (approximately 70 cases). There was only one reported alcohol possession charge. The second primary category for arrests is Assault and Battery (e.g., fight, affray, aggravated assault), which occurs most frequently at middle and high schools.

Table 1. Charges within Arrest Cases, 2018-2019

Charge Categories	Number of Incidents/Cases
Possession of Drugs or Alcohol charges	86
Assault & Battery charges	61
Other (e.g., Disorderly conduct, Other property, Vandalism)	37
Weapon charges	26
School Threats	9
Theft charges	5
Sexual Assault charges	3

⁷ The SRO Interaction Form allows for SROs to select specific charge categories based on South Carolina criminal code (e.g., Narcotics Schedule I) and, when needed, enter text for any charges not listed. Selection of criminal charges are based on prior years most common charges (e.g., drugs, fights). More than one charge may be selected and/or entered for each incident. These charges are not based on specific individuals, but of the incident/case itself. For example, the incident of nine females in a fight at Westwood High is counted at the incident level for a single arrest charge of Assault and Battery. Additional categories are developed in this analysis to account for incidents with multiple charge types.

ARRESTS BY AGE, GENDER AND RACE

For the reporting year, there were two methods to gather information about the number of persons arrested. The first method is from an entry within the SRO Interaction Form that the officers identify the number of persons arrested within an interaction. Based on this entry, the SROs reported 304 persons arrests for the school year (confirmed incidents only). This method only gives you an **aggregated count of arrested persons** and was confirmed by SRO leadership during audits. The second method is based on the SRO's entry of demographic information for each person. Based on calculations for each entry of gender for persons arrested, there are 344 individuals indicated as arrested during this school year.

Based on the details provided for individual demographics, the following information regarding gender, age, and race was analyzed and presented (see Figures 4-6). This information was used in comparing the arrested population to the 180-day Active Headcount provided for the schools and school districts by the South Carolina Department of Education.⁸

Calculating the Rate of Arrests by Gender and Race

The rate per 100 students is estimated based on the population and incidents of arrests. Each school hosts a different population. To compare schools and/or account for population changes, the rate of arrest incidents per gender:

$$\left(\frac{\text{Number of Arrest Incidents for Males}}{\text{Total Population of Males}} \right) * 100 = \text{Rate per 100 male students}$$

Rate calculations are used to compare populations across groups and the frequency of an event occurring within a population. For Richland County school districts, this allows stakeholders to understand the rate of incidents among schools, identify schools with higher rates of arrest, and to develop problem-solving responses to decrease the incidents of arrests.⁹

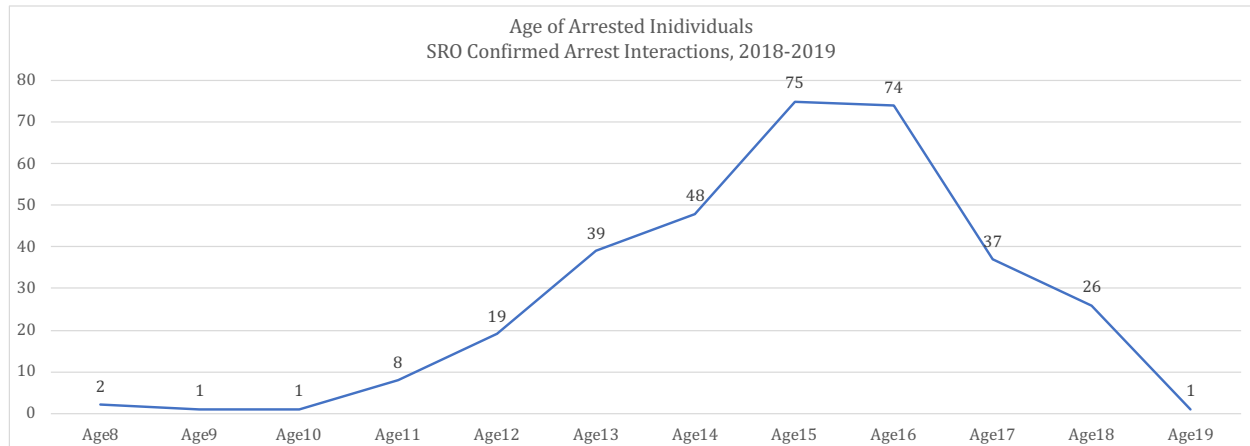
⁸ Headcounts per Department of Education can be found online here: <https://ed.sc.gov/data/other/student-counts/active-student-headcounts/>.

⁹ For more information about national juvenile justice statistics, please visit the Office of Juvenile Justice and Delinquency Prevention Statistical Briefing Book, <https://www.ojjdp.gov/ojstatbb/>. Public safety agencies commonly evaluate data per month, per quarter, as well as year-over-year comparisons to demonstrate trends of events. These parameters are established and promoted by the Department of Justice and Bureau of Statistics. More information can be found here: <https://www.bjs.gov/index.cfm?ty=tp&tid=151>

ARRESTS BY AGE

Based on demographic information for all persons listed in SRO Interaction form, there were 331 individual ages recorded.¹⁰ These reports indicate higher arrests occurring among individuals ages 13-17, which is consistent with youth delinquency trends.

Figure 4. Age of Arrested Persons, 2018-2019



ARRESTS BY GENDER

Based on demographic information for all persons listed in SRO Interaction form, there are 344 individual genders listed. These indicate a total number of 231 males and 113 females arrested during the reporting year. Figure 5 details the number of individuals arrested for reporting schools compared to the total population for the school.¹¹

¹⁰ Twelve records did not have ages recorded for individuals listed.

¹¹ Blythewood High includes arrests for the High School and Blythewood Academy. Heyward Career Technology Center and Olympia Learning Center population counts are not reported by South Carolina Department of Education; therefore, only arrests for the school are provided.

Figure 5. Arrests by Gender and Population, 2018-2019

School	Total Student Population	Total Females Enrolled	Total Females Arrested	Female Arrests (Per 100)	Total Males Enrolled	Total Males Arrested	Male Arrest (per 100)
A. C. Flora High	1,381	688	3	0.436	693	13	1.876
Academy For Success			1			0	
Blythewood High	1,945	931	5	0.537	1,014	18	1.775
Columbia High	607	295	9	3.051	312	15	4.808
Crayton Middle	1,125	567	2	0.353	558	2	0.358
Dent Middle	1,255	628	3	0.478	627	16	2.552
Dutch Fork High	1,725	884	0	0.000	841	4	0.476
Dutch Fork Middle	1,065	519	0	0.000	546	1	0.183
E L Wright Middle	1,324	646	2	0.310	678	5	0.737
Heyward Career and Technology Center			0			2	
Hopkins Elem	294	142	0	0.000	152	4	2.632
Hopkins Middle	485	227	7	3.084	258	14	5.426
Keenan High	656	332	5	1.506	324	11	3.395
Kelly Mill Middle	948	463	0	0.000	485	1	0.206
Lower Richland High	1,162	562	12	2.135	600	50	8.333
Olympia Learning Center			2			7	
Richland Northeast High	1,297	698	20	2.865	599	20	3.339
Ridge View High	1,416	707	10	1.414	709	13	1.834
Southeast Middle	492	234	3	1.282	258	1	0.388
Spring Valley High	2,054	1,036	1	0.097	1,018	6	0.589
St Andrews Middle	691	351	1	0.285	340	1	0.294
Summit Parkway Middle	1,195	559	11	1.968	636	0	0.000
Westwood High	1,416	676	16	2.367	740	27	3.649

ARRESTS BY RACE

Based on demographic information for all persons listed in SRO Interaction form, there are 343 individual's races listed (see Table 2). Ninety percent of arrests include African Americans.

Table 2. Arrests of Individuals Arrested, 2018-2019

Race	Persons Arrested	
	N	%
Black/African American	310	90.38%
Caucasian	18	5.25%
Hispanic or Latino	12	3.50%
Two or more races	3	0.87%

The race of arrested individuals was evaluated per school. The 180-day headcount reported by the South Carolina's Department of Education (see Appendix A) is used to compare the number of arrests per racial category to the overall student population by racial category (see Figure 6).

For all reporting schools, the average number of arrests per school is 14.91. The following **10 schools report arrests above average over all:**

- A.C. Flora High
- Blythewood High*
- Columbia High
- Dent Middle
- Hopkins Middle
- Keenan Middle
- Lower Richland High
- Richland Northeast High
- Ridge View High
- Westwood High

The average number of African American arrests for all reporting schools is 13.48 students. All of the above schools, except A.C. Flora, report arrests above the average number of arrests for African American students.

In comparing arrests numbers with racial populations per school, the **following 16 schools (66% of reporting schools) report higher rates of arrests among the African American population than all other races:**

- A.C. Flora High
- Blythewood High*
- Columbia High
- Crayton Middle
- Dent Middle
- Dutch Fork High
- E.L. Wright Middle
- Hopkins Elementary
- Hopkins Middle
- Keenan High
- Lower Richland High
- Richland Northeast high
- Ridge View High
- Spring Valley High
- Summit Parkway Middle
- Westwood High

Figure 6. Number and Rates of SRO Arrests by Race, 2018-2019

School Name	SRO Interaction Form Confirmed Arrests								
	Total Arrests	Rate of Arrests (per 100, Total Population)	Arrests - Black or African American	Rate of Arrests Black or African American (per 100)	Arrests - Hispanic or Latino	Arrests - Two or more races	Arrests- White	Total Arrests - All Other Races	Rate of Arrests - All Other Races (per 100)
A. C. Flora High	12	0.869	12	2.348	2	0	2	4	0.473
Academy For Success	1		1		1	0	0	1	
Blythewood High*	20	1.028	20	2.242	0	0	2	2	0.200
Columbia High	21	3.460	22	4.239	0	0	0	0	0.000
Crayton Middle	4	0.356	4	0.864	1	0	1	2	0.308
Dent Middle	17	1.355	17	2.174	0	0	0	0	0.000
Dutch Fork High	4	0.232	4	0.702	0	0	2	2	0.189
Dutch Fork Middle	0	0.000	0	0.000	0	0	0	0	0.000
E L Wright Middle	5	0.378	5	0.712	0	0	1	1	0.193
Heyward Career and Technology Center	2		2		2	0	0	2	
Hopkins Elem	4	1.361	4	1.498	0	0	0	0	0.000
Hopkins Middle	21	4.330	21	4.861	0	0	0	0	0.000
Keenan High	15	2.287	15	2.427	0	0	0	0	0.000
Kelly Mill Middle	0	0.000	0	0.000	1	0	0	1	0.313
Lower Richland High	52	4.475	56	5.572	1	1	4	6	3.922
Olympia Learning Center	8		8		2	0	0	2	
Richland Northeast High	40	3.084	40	4.651	0	0	0	0	0.000
Ridge View High	17	1.201	19	1.710	1	1	1	3	1.071
Southeast Middle	3	0.610	3	0.748	0	0	1	1	1.111
Spring Valley High	6	0.292	6	0.576	0	0	1	1	0.115
St Andrews Middle	1	0.145	2	0.334	0	0	0	0	0.000
Summit Parkway Middle	9	0.753	9	1.329	1	0	1	2	0.410
Westwood High	39	2.754	40	3.670	0	1	2	3	0.943

*Note: Blythewood High includes arrests reported for the High School and for Blythewood Academy School.

APPENDIX A – SOUTH CAROLINA DEPARTMENT OF EDUCATION STUDENT POPULATION

This information is the 180-day headcount, by school and race, for schools reporting arrests by RCSD SROs.

School Name	Student Population (South Carolina Department of Education)							
	Total Student Population	Black or African-American	American Indian	Asian	Hispanic or Latino	Hawaiian or Other Pacific Islander	Two or More Races	White
A. C. Flora High	1,381	511	2	21	106	1	58	682
Academy For Success								
Blythewood High	1,945	892	2	44	109	5	64	829
Columbia High	607	519	0	29	17	0	28	14
Crayton Middle	1,125	463	1	11	75	0	59	516
Dent Middle	1,255	782	4	84	141	6	34	204
Dutch Fork High	1,725	570	4	88	78	3	57	925
Dutch Fork Middle	1,065	347	1	34	42	1	48	592
E L Wright Middle	1,324	702	4	98	173	1	37	309
Heyward Career and Technology Center								
Hopkins Elem	294	267	0	0	3	0	11	13
Hopkins Middle	485	432	0	1	10	0	23	19
Keenan High	656	618	0	1	12	0	11	14
Kelly Mill Middle	948	598	4	23	60	3	55	205
Lower Richland High	1,162	1,005	0	4	27	0	54	72
Olympia Learning Center								
Richland Northeast High	1,297	860	4	36	197	8	40	152
Ridge View High	1,416	1,111	2	19	86	4	52	142
Southeast Middle	492	401	0	0	27	1	21	42
Spring Valley High	2,054	1,042	3	130	238	7	75	559
St Andrews Middle	691	599	1	18	14	1	34	24
Summit Parkway Middle	1,195	677	1	21	122	8	75	291
Westwood High	1,416	1,090	1	6	90	1	41	187